

Single Leaf PLANE Line Acoustic Door

Sound Insulation**R_{w,P} 38 dB****tested acc. to EN ISO 10140-2**

Optional Audited Additional Functions

- Burglar Protection	RC2/RC3/RC4/RC5	tested acc. to EN 1627
- Bullet Resistance	FB4/FB6-NS	tested acc. to EN 1522
- Air Tight	up to class 4	tested acc. to EN 1026
- Rain- and Fire-Water Tight	class 6A	tested acc. to EN 1027
- Wind Load Resistance	up to class C5	tested acc. to EN 12211
- Blast Resistance	up to 20 kPa	tested acc. to EN 13124-1
- Explosion Protection	up to zone 1/21	acc. to EN 1127-1 or ATEX 2014/34/EU
- Stainless Steel		

Range of Dimension

Range of Dimension**Width from 500 mm to 1500 mm**
Height from 500 mm to 3000 mm

Technical Specification and Tender Text

Product:	PL 1 single leaf acoustic door brand Buchele tested acc. to EN ISO 10140-2
Door Type:	PLANE Line PL 1 BASIC
Sound Insulation R_{w,P}	38 dB
Structural Opening: x mm
Door Leaf:	Double-walled, planar 70 mm thick steel door without hinge embossing, three sides rebated with thick rebate Without bottom stop. Special insulating inserts fully laid-in and glued. Drop seal system.
Threshold:	Floor bracket as separation sill. Surface galvanized and welded to the frame.
Frame:	3-sided circumferential rebated corner frame. High-quality multi chamber sealing profile adjustable fixed in the three-sided groove.
Hinges:	Three-part, height adjustable construction hinges with hinge pin retention and ball bearing spacer ring for smooth door movement.
Fitting:	Mortise lock with latch lever function acc. to EN 12209 (prepared for installation of a profile cylinder lock, provided by customer). Door handle set in acc. to EN 1906 fixed pivoted synthetic material black in U-shape with rounded short-plate.
Surface:	Door leaf and frame galvanized und primed with 2K-PUR primer (Very High Solid) similar RAL 7035.

Alternative: PLANE Line PL 1 PREMIUM with flush mounted optics

- Frame:** 3-sided circumferential rebated PLANE Line special corner frame for flush mounted optics on hinge side.
High-quality multi-chamber sealing profile adjustable fixed in the three-sided groove.
- Hinges:** Object hinges type VB-3D 160 adjustable in three dimensions.
Fixture element with slide bearings inside for smooth door movement.

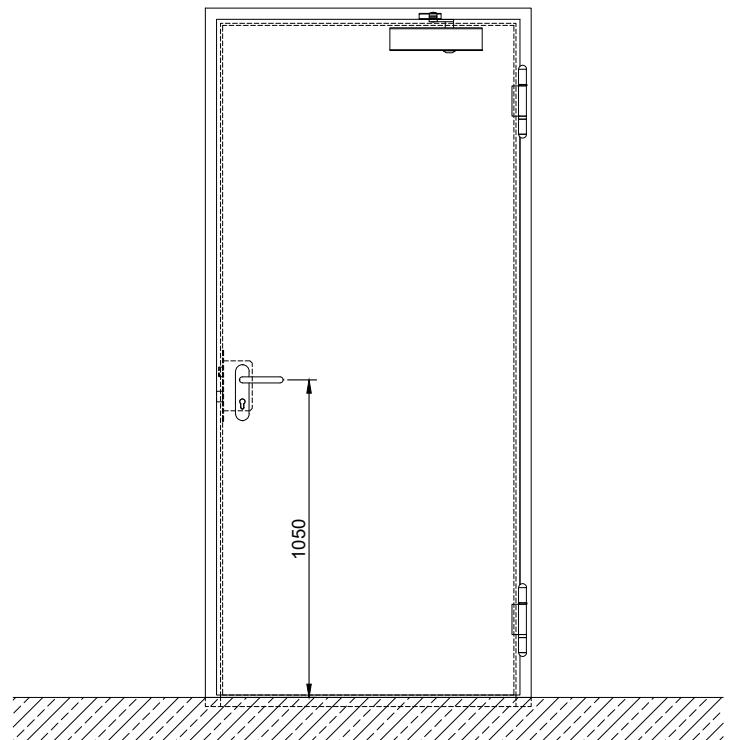
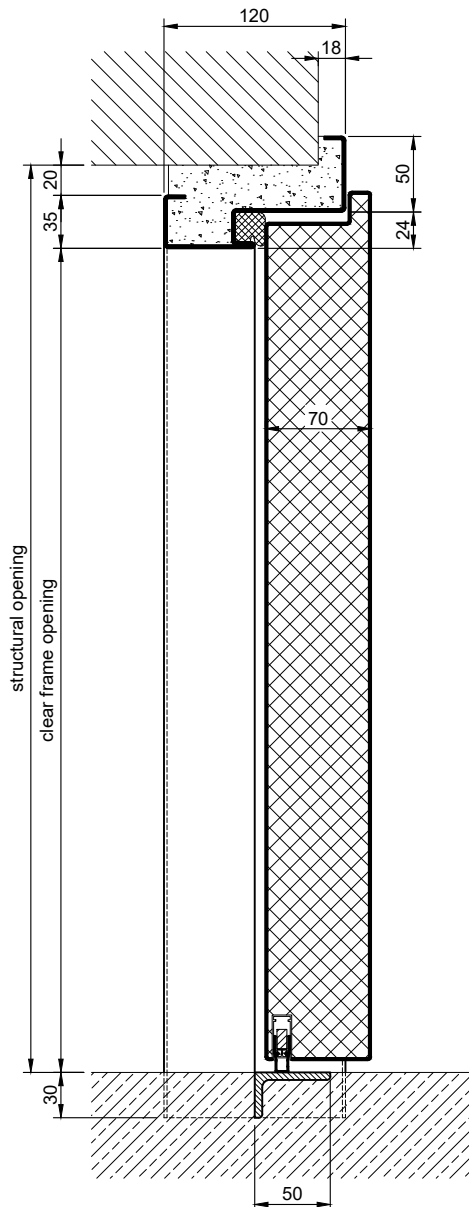
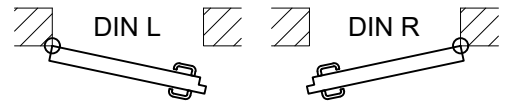
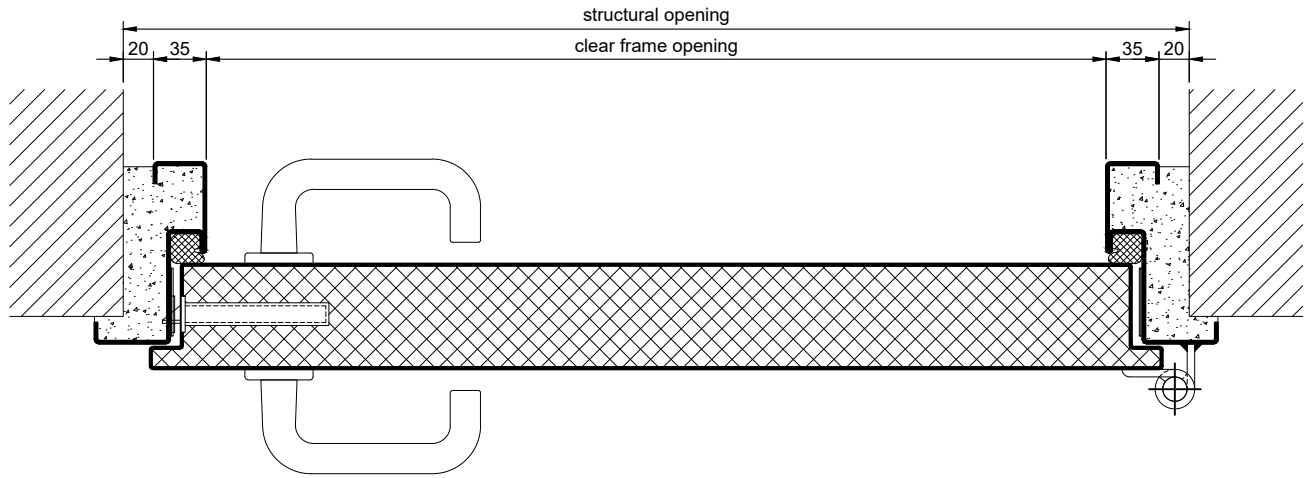
Alternative: PLANE Line PL 1 SUPERIOR with flush mounted optics

- Frame:** 3-sided circumferential rebated PLANE Line special corner frame for flush mounted optics on hinge side.
High-quality multi-chamber sealing profile adjustable fixed in the three-sided groove.
- Hinges:** Concealed hinge system adjustable in three dimensions.

Supplementary Equipment

- Standard Glazing:** Single glazing or insulating glazing fixed with profiled and visible screwed steel glazing bars.
Minimum border 125 mm on side and top, base 300 mm.
- Flush Glazing:** PLANE Line special triple-glazing flush mounted with outer edge of door leaf on hinge side and opposite hinge side.
Edge enamelling and permanent elastic glazing joint in colour black RAL 9004.
Minimum border 125 mm on side and top, base 300 mm.
- Stainless Steel:** Material 1.4301 (V2A) or 1.4404 (V4A),
Surface mill finish or brushed.
- BUCHELE DELUXE:** The exclusive surface coating.

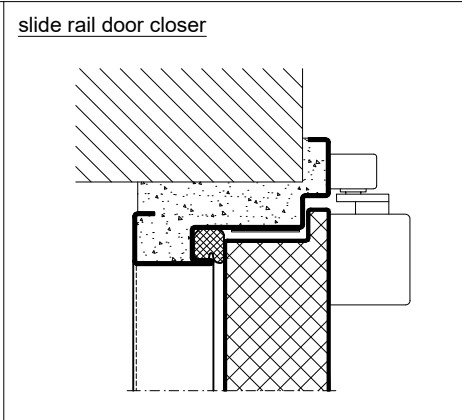
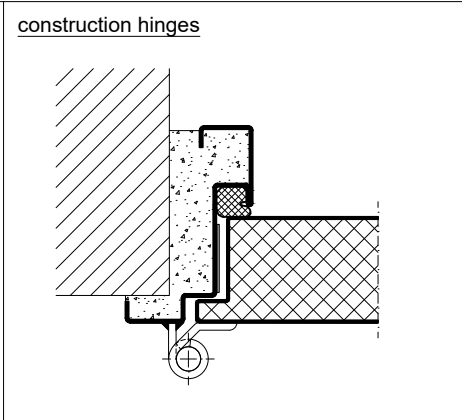
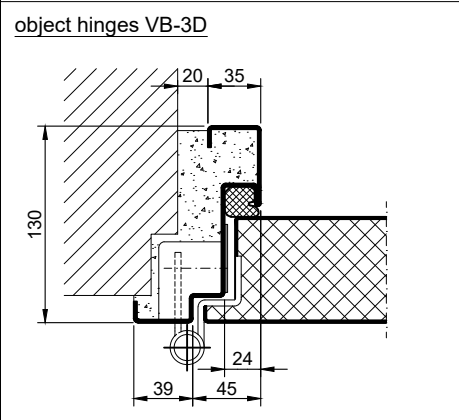
BASIC - Version



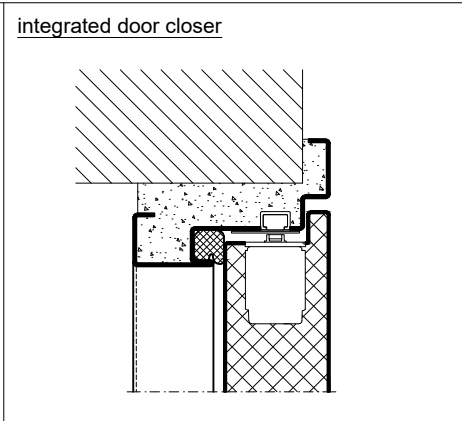
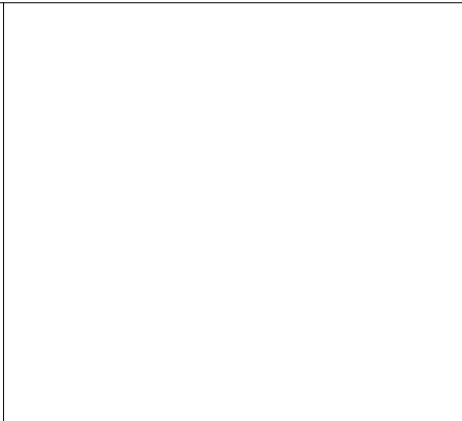
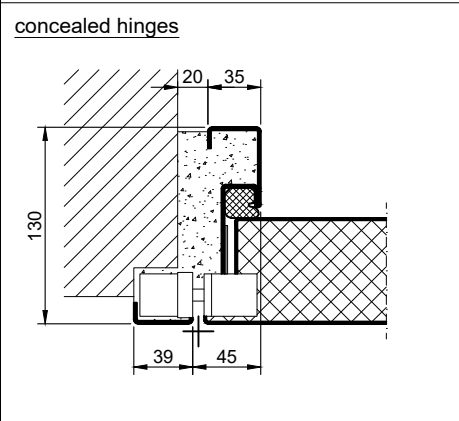
1.1.1. PLANE LINE PL 301 38 DB_EN

technical modifications reserved - edition 03/2024

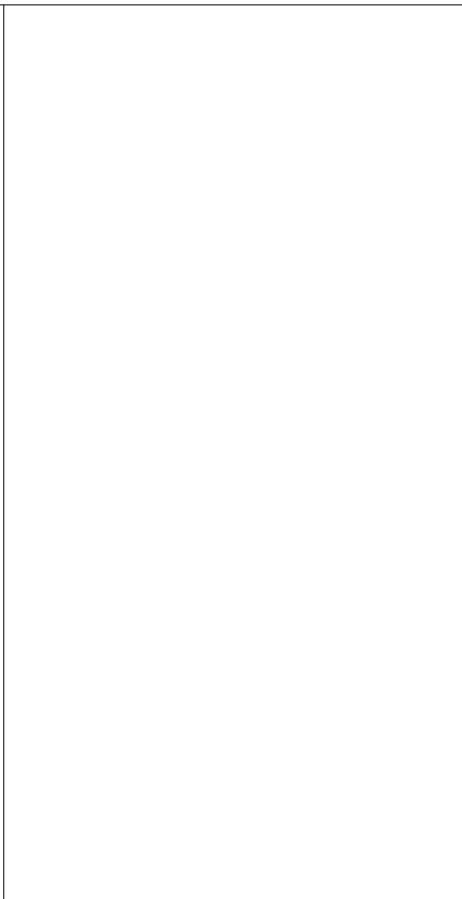
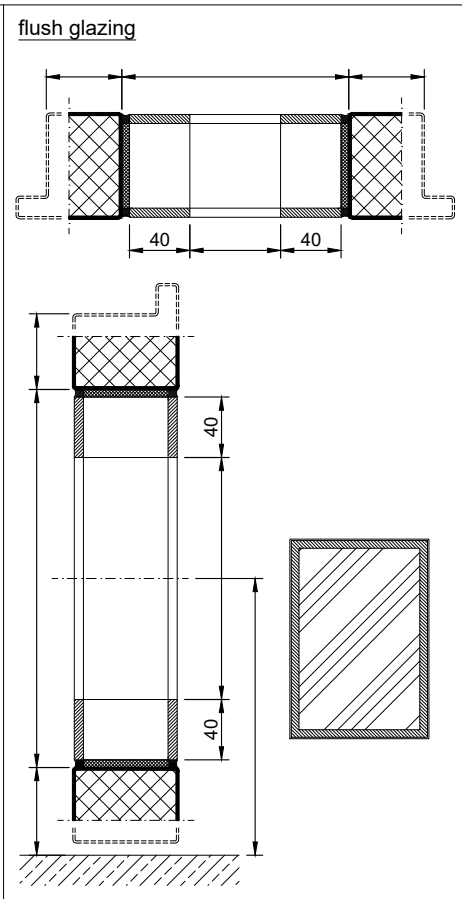
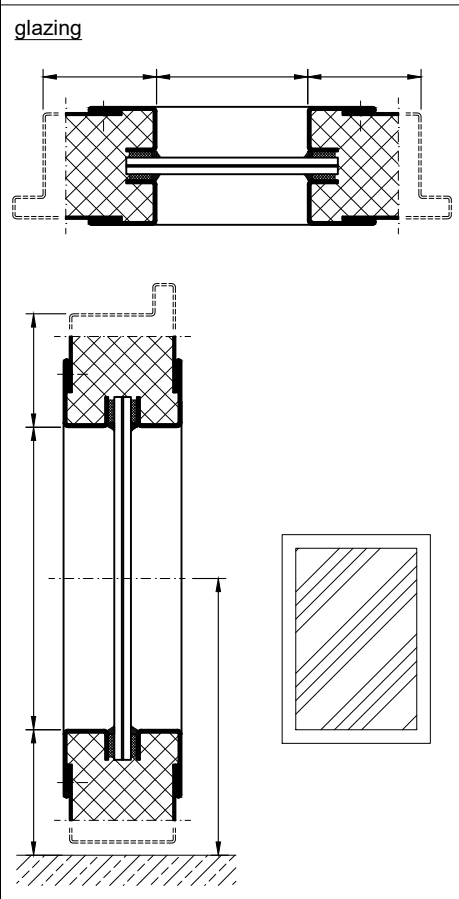
PREMIUM Version



SUPERIOR Version



Options



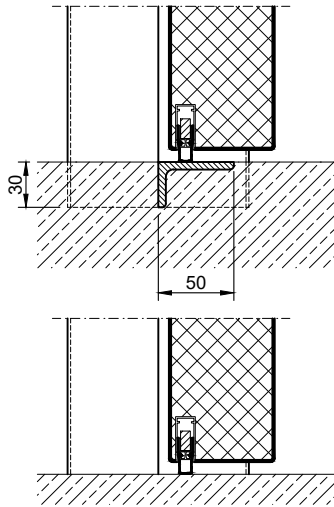
1.1.1. PLANE LINE PL 301 38 DB_EN

Frames BASIC	Frames PREMIUM/SUPERIOR	Variants (illustration BASIC)
<p>corner frame</p>	<p>corner frame</p>	<p>corner frame with additional frame</p>
<p>encasing frame</p>	<p>encasing frame</p>	<p>encasing frame with counter frame</p>
<p>block frame</p>	<p>block frame</p>	<p>juttet block frame</p>
<p>corner frame with counter frame</p>	<p>corner frame with counter frame</p>	<p>corner frame at support / pillar</p>
<p>profile block frame</p>	<p>profile block frame</p>	<p>pre-wall frame</p>

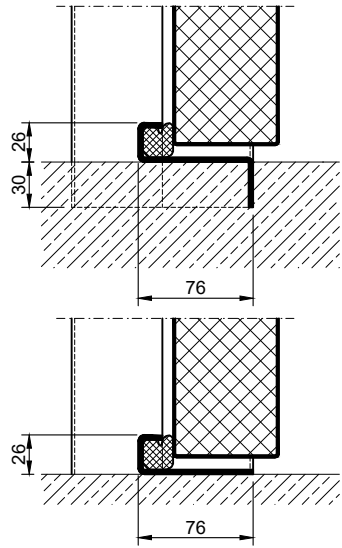
1.1.1. PLANE LINE PL 301 38 DB_EN

Thresholds

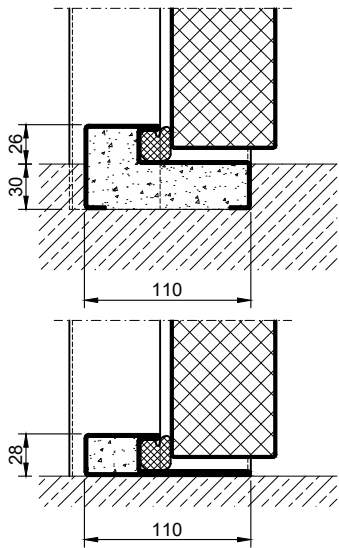
drop seal



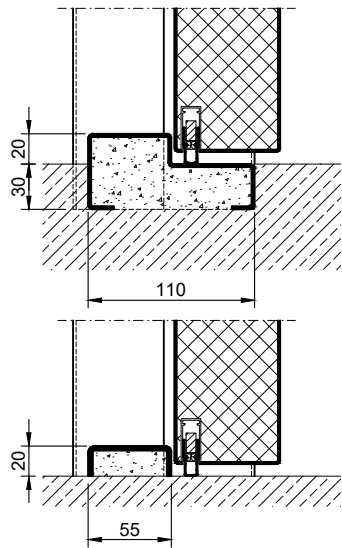
stop sill with seal



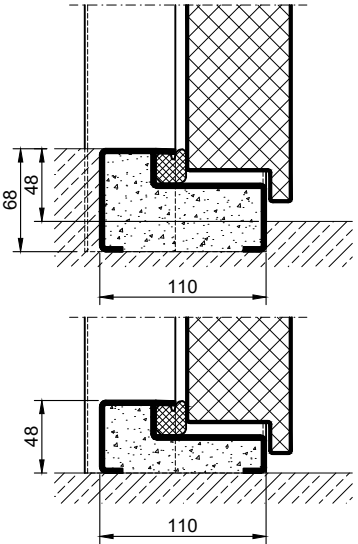
stop sill with seal



stop sill with drop seal



full sill



1.1.1. PLANE LINE PL 301 38 DB_EN

technical modifications reserved - edition 03/2024